

More about plants

A flowering plant is made up of different parts.

These **different parts** are: root, stem, seed, leaf, flower and fruit.

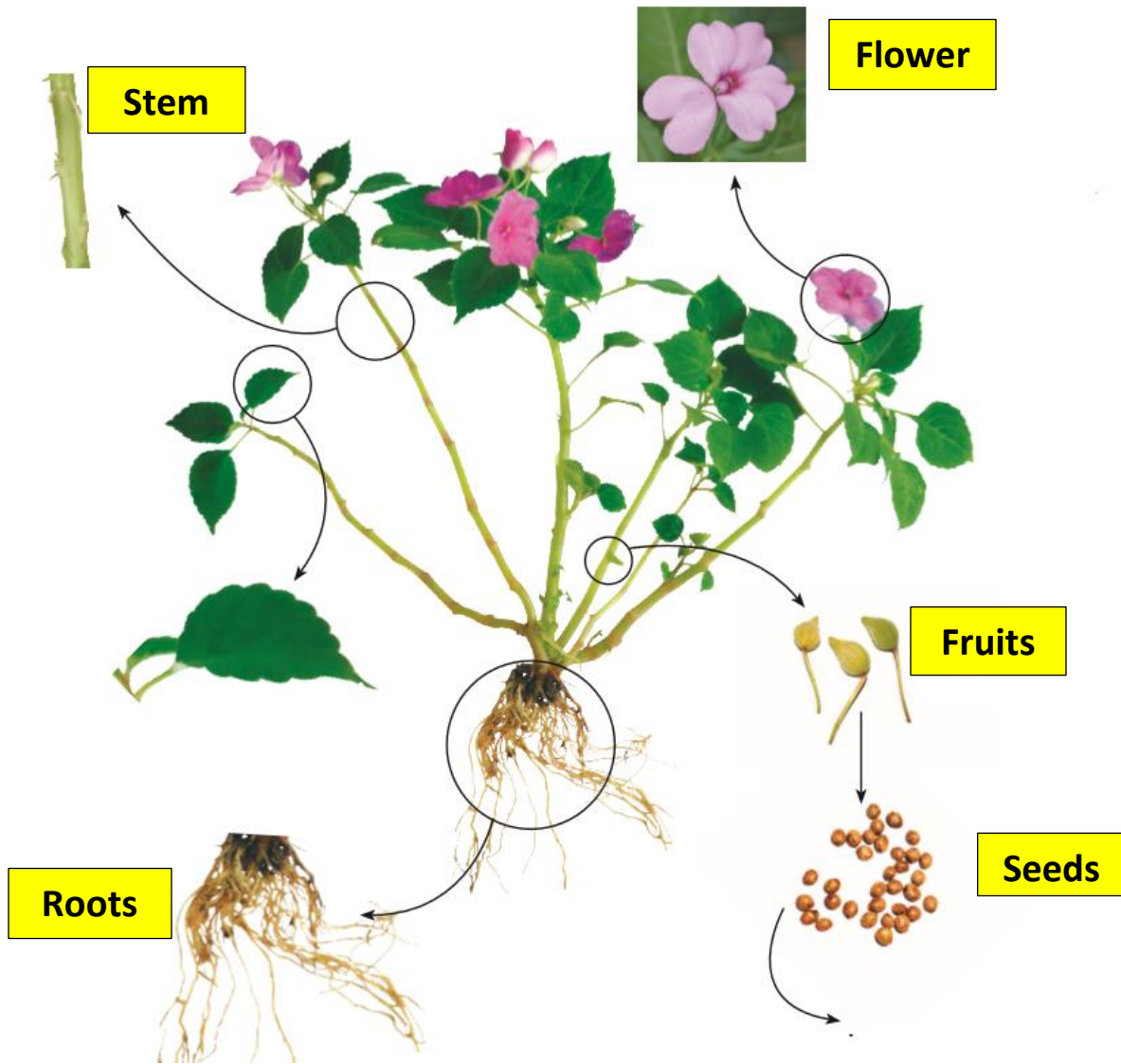


Figure 1: Balsam plant

The flower

What are the **functions of a flower**?

- (i) The flower helps in pollination by attracting insects.
- (ii) The flower produces fruits and seeds.

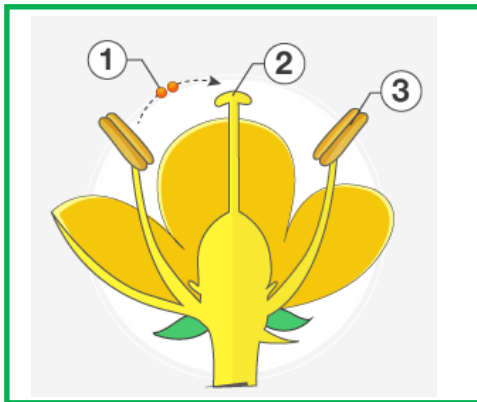
What is pollination?

Pollination is the transfer of pollen from the male part to the female part of a flower.

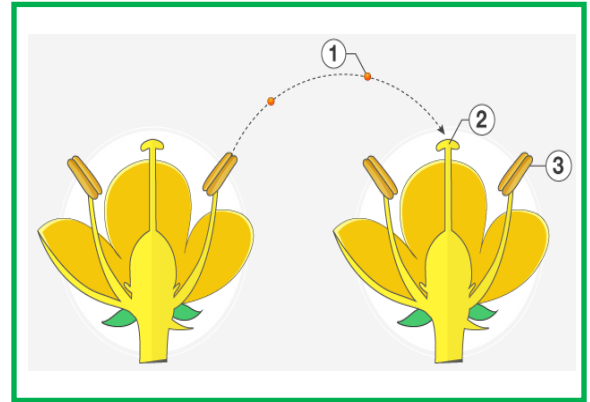
Pollen can also be transferred from one flower to another with the help of insects (bees, butterflies, wasps ...), other animals (birds, lizards, bats ...) and the wind.

Pollination is necessary for a flower to become a fruit.

(a) Pollination in the same flower

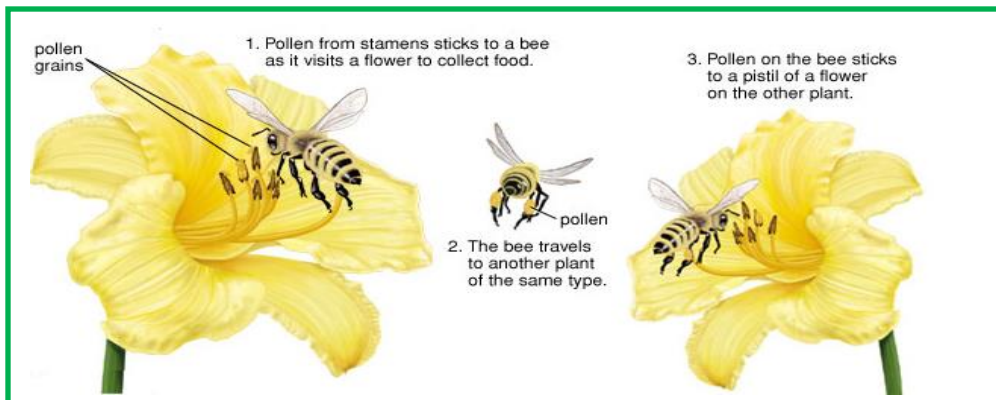


(b) Pollination from one flower to another



1: Pollen 2: Female part 3: Male part

(c) Insects like bees are very good **pollinators**



The seed

What are the **functions of the seed**?

- (i) The seed germinates to produce new plants.
- (ii) The seed nourishes and protects the new shoot and root during germination.

What is germination?

Germination is the process by which the seed germinates to produce new plants.

Steps / Stages for germination of a seed

